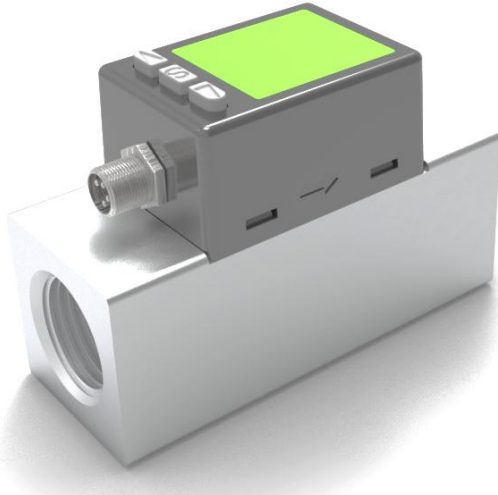
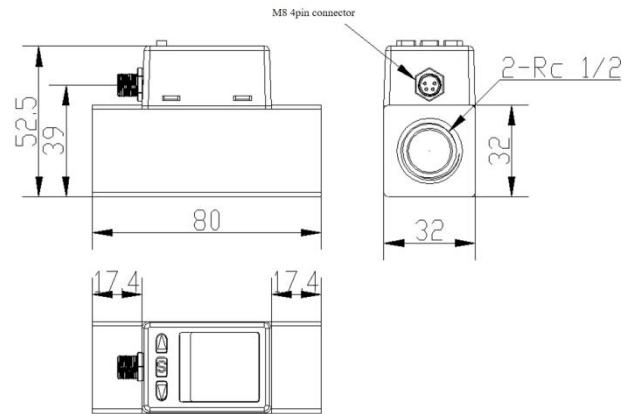


## AMS2000 Mass Flow Meter



### 3. Dimension



Unit: mm

### 1. Product Summary

AMS2000 is a thermal mass flow meter that calculates the mass flow of the gas by measuring the change in resistance. The sensor adopts the self-developed MEMS mass flow chip. It has advantages such as easy-to-use, high accuracy, high stability, high and low temperature resistance, good linearity, and fast response time.

AMS2000 mass flow controller is calibrated before delivery, the range, accuracy, repeatability, response time... are all calibrated.

### 2. Key Features

- ◆ Measure mass flow and temperature simultaneously
- ◆ Measurement range: 0~200L/min
- ◆ Good repeatability
- ◆ Various gas measurements
- ◆ Standard Modbus RTU communication
- ◆ LCD display
- ◆ Power supply: 9~24V DC

### 4. Technical Parameters

Measurement range	0~500L/min(standard)
Accuracy	±3%FS
Measured gas temperature range	0~50°C
Working voltage	external 9~24V DC
Max working pressure	0.8MPa
Communication	RS485

### 5. Applications

AMS2000 can be used to monitor the mass flow of air, nitrogen, argon, carbon dioxide, helium, oxygen and other dry, clean and non-corrosive gases (except for flammable and explosive gases). It can be widely used in university scientific research, fire protection, environmental monitoring, tobacco, smart agriculture, food, medicine and other industries.



**Guangzhou Aosong Electronic Co., Ltd.**

Add: No.17, Yunjun Road, Huangpu District, Guangzhou, China

Tel: +86 18122702030 Fax: +86 20-89852796

Email: inquiry@aosong.com

Web: www.aosong.com/en, www.asairsensors.com